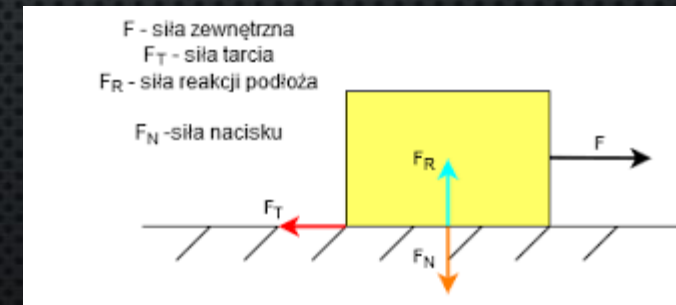
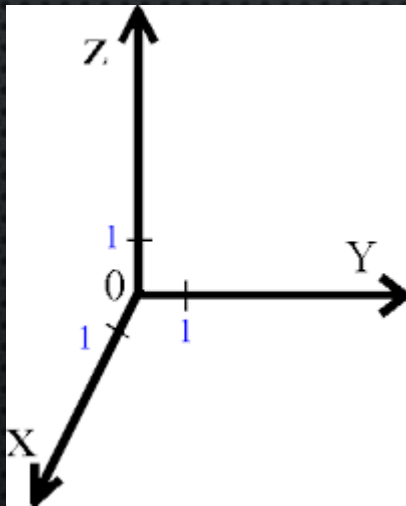
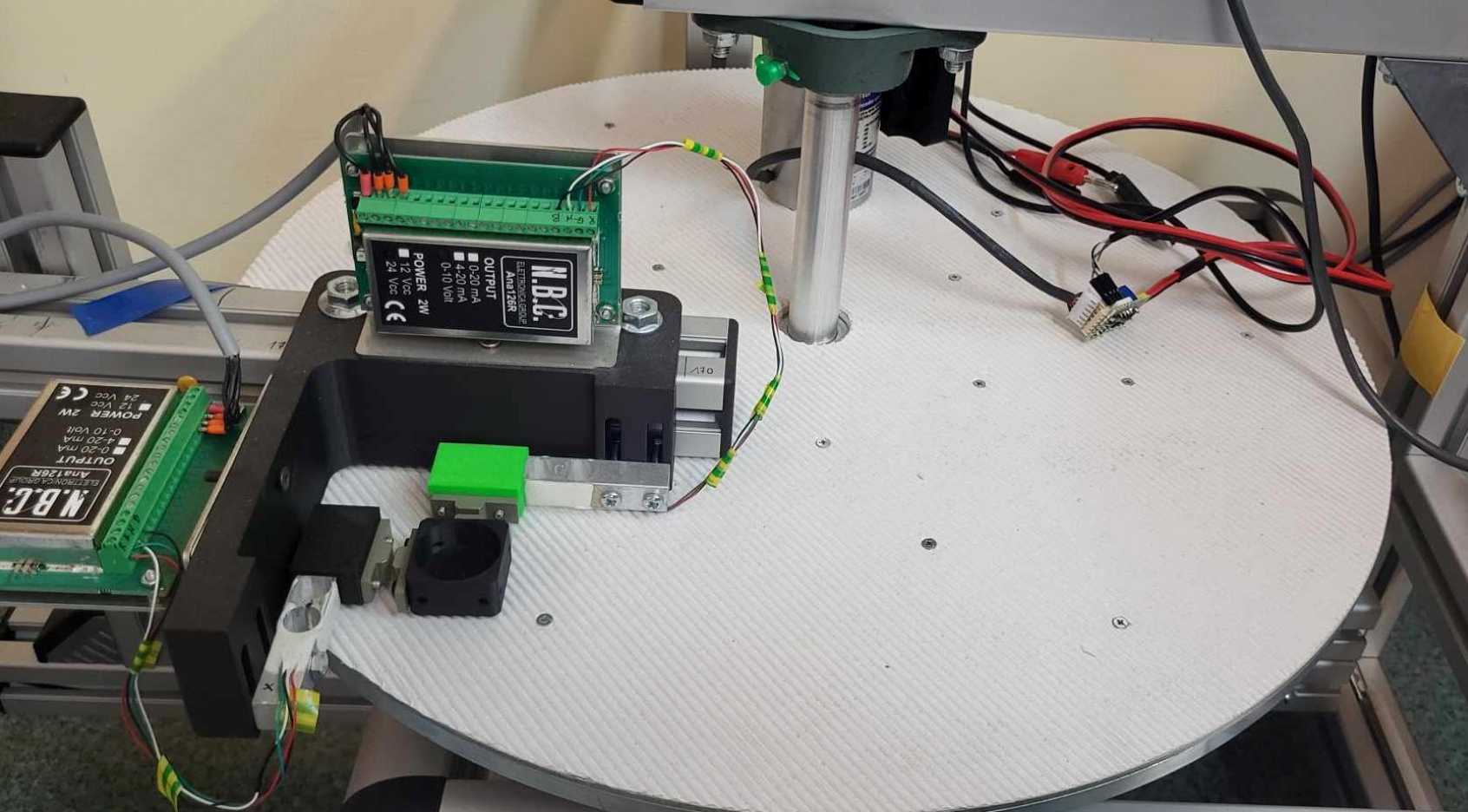


POMIAR I ANALIZA ANIZOTROPOWYCH SIŁ TARCIA SUCHEGO- KARTEZJAŃSKI UKŁAD POMIAROWY.

DR INŻ. BARTOSZ STAŃCZYK

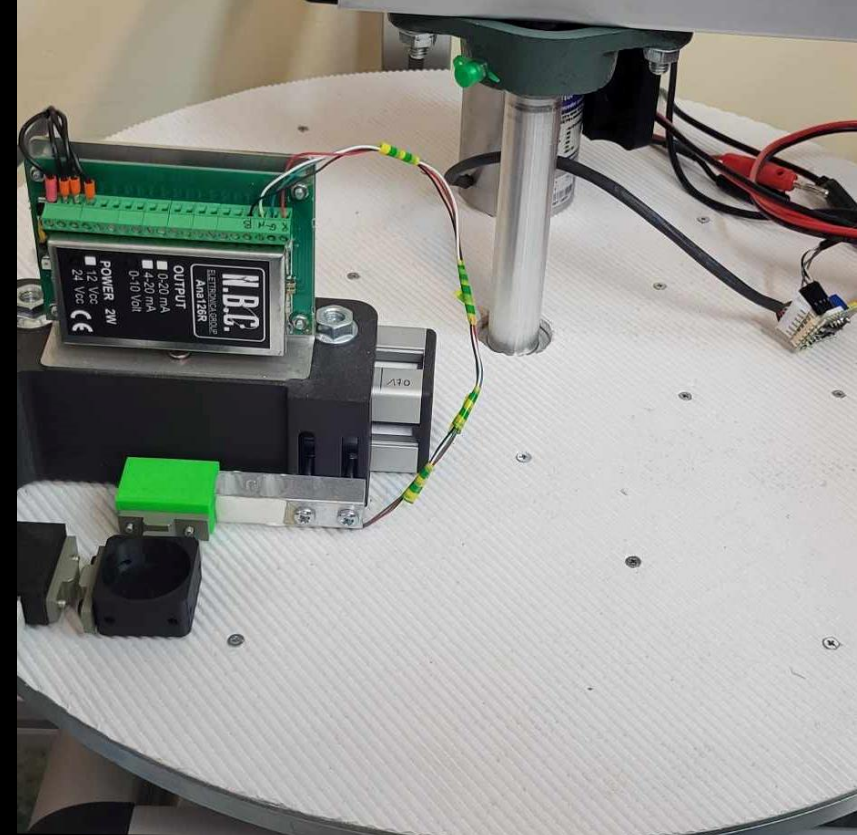
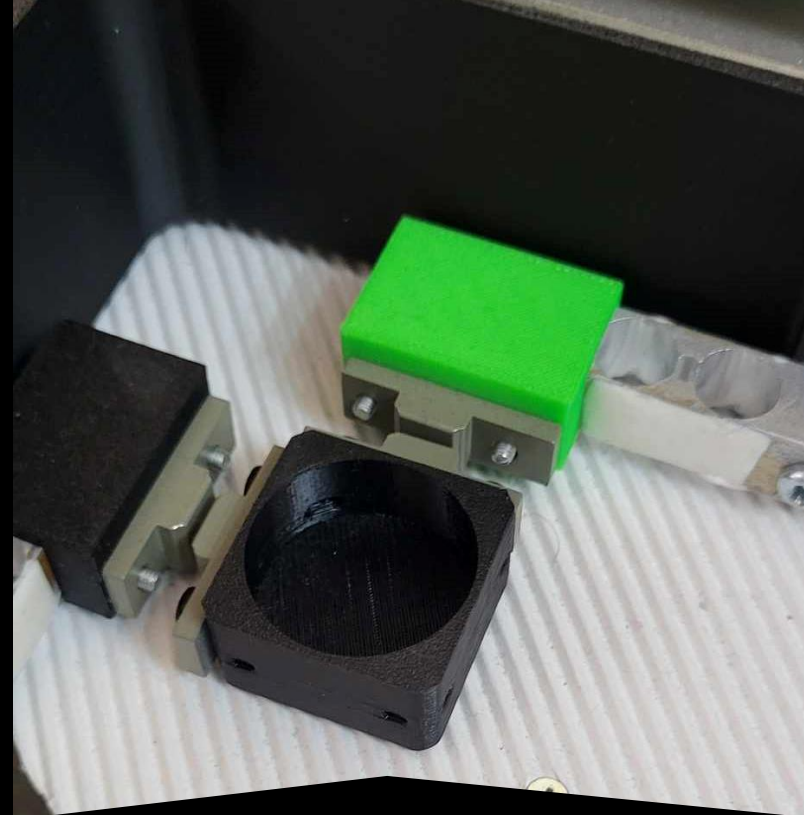




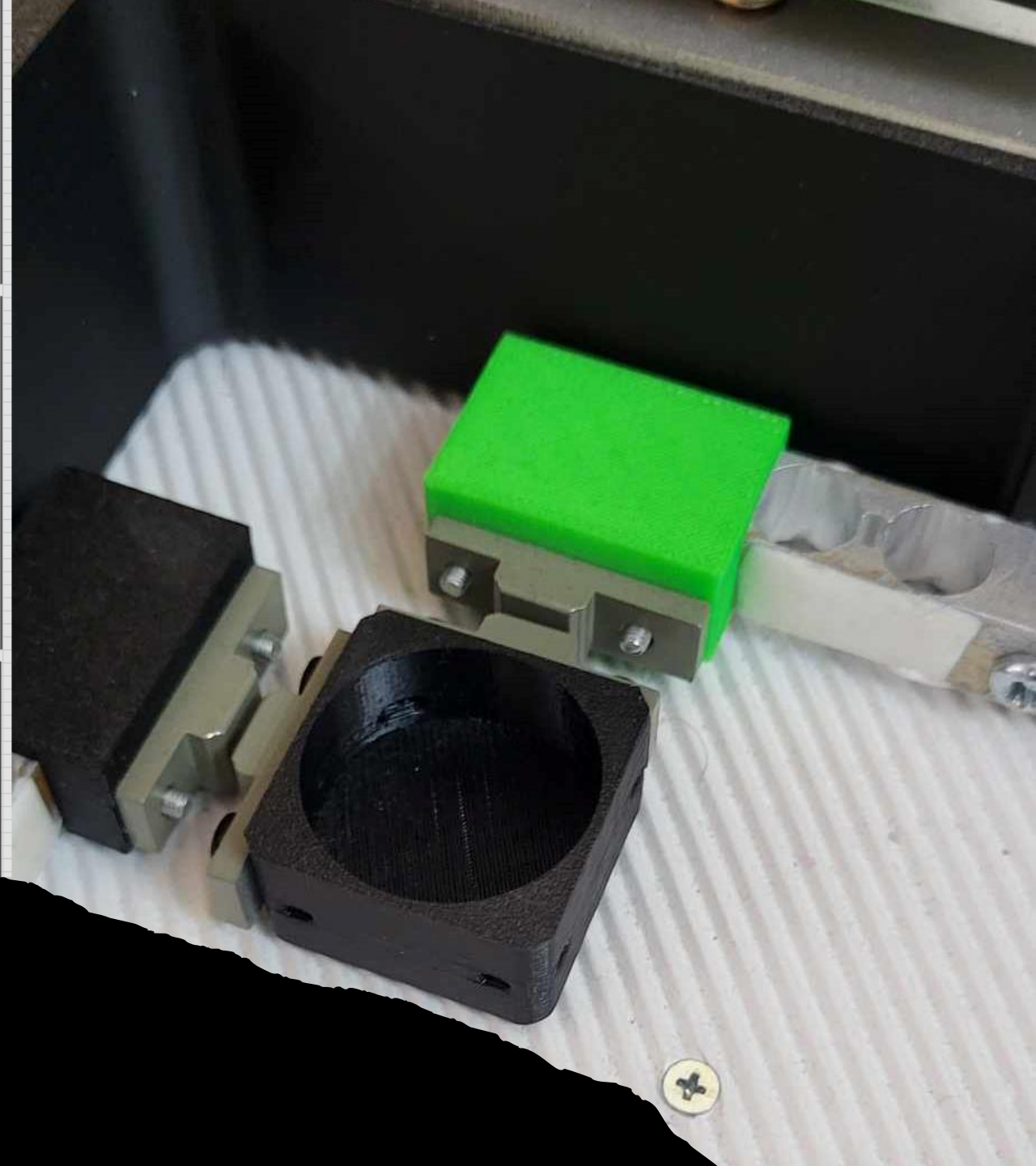
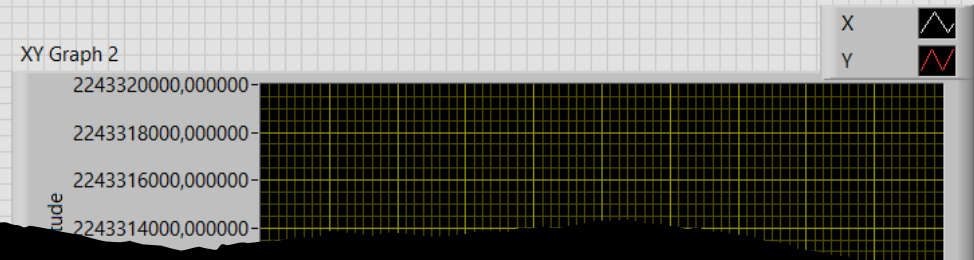
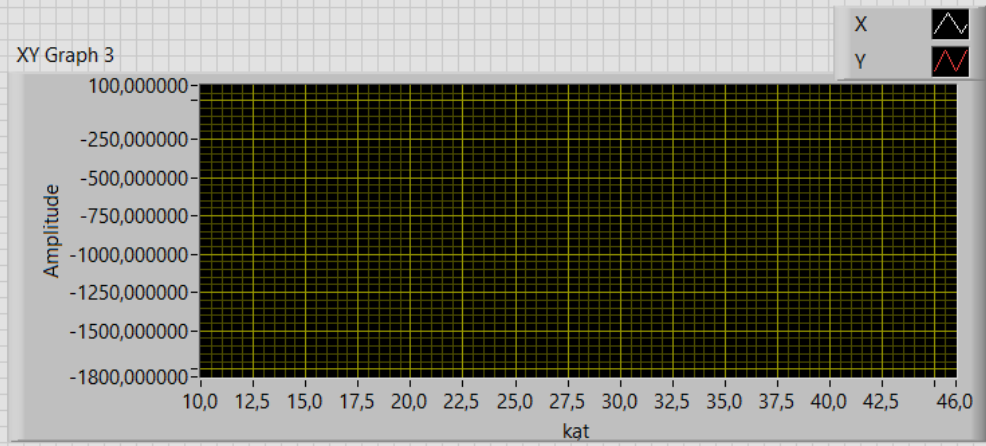
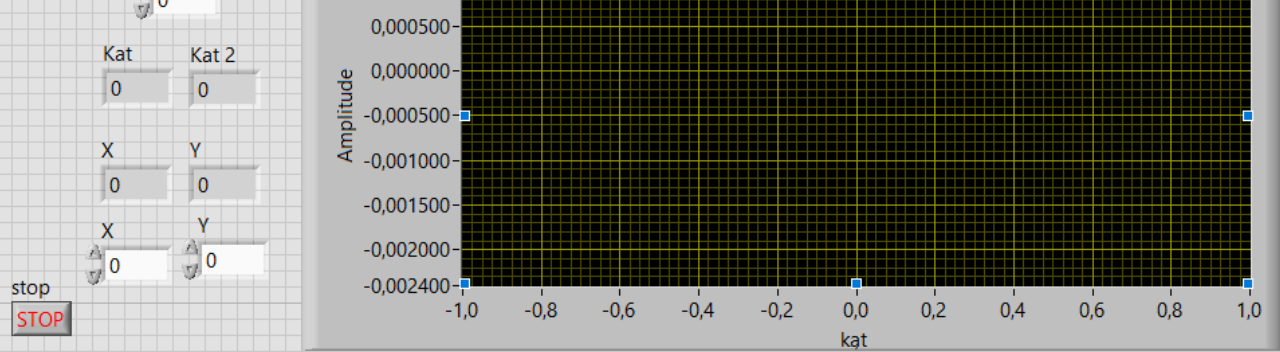
POMIAR KOŁOWY



Poli(tetrafluoroetylen)

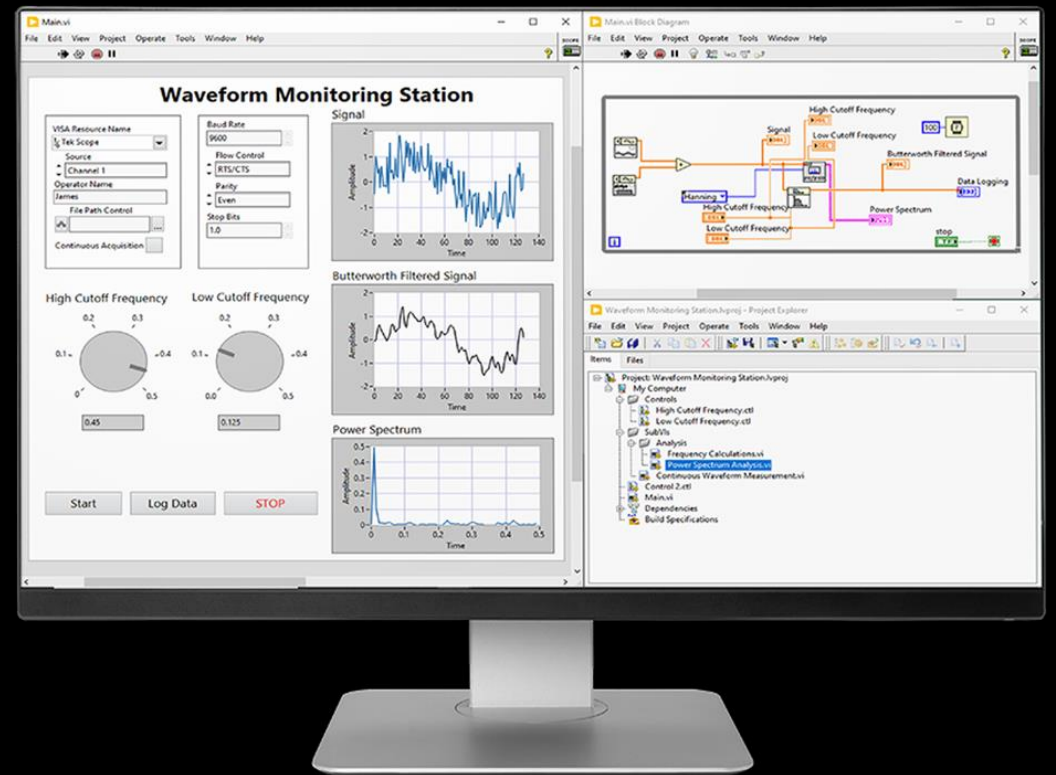


PRÓBKA

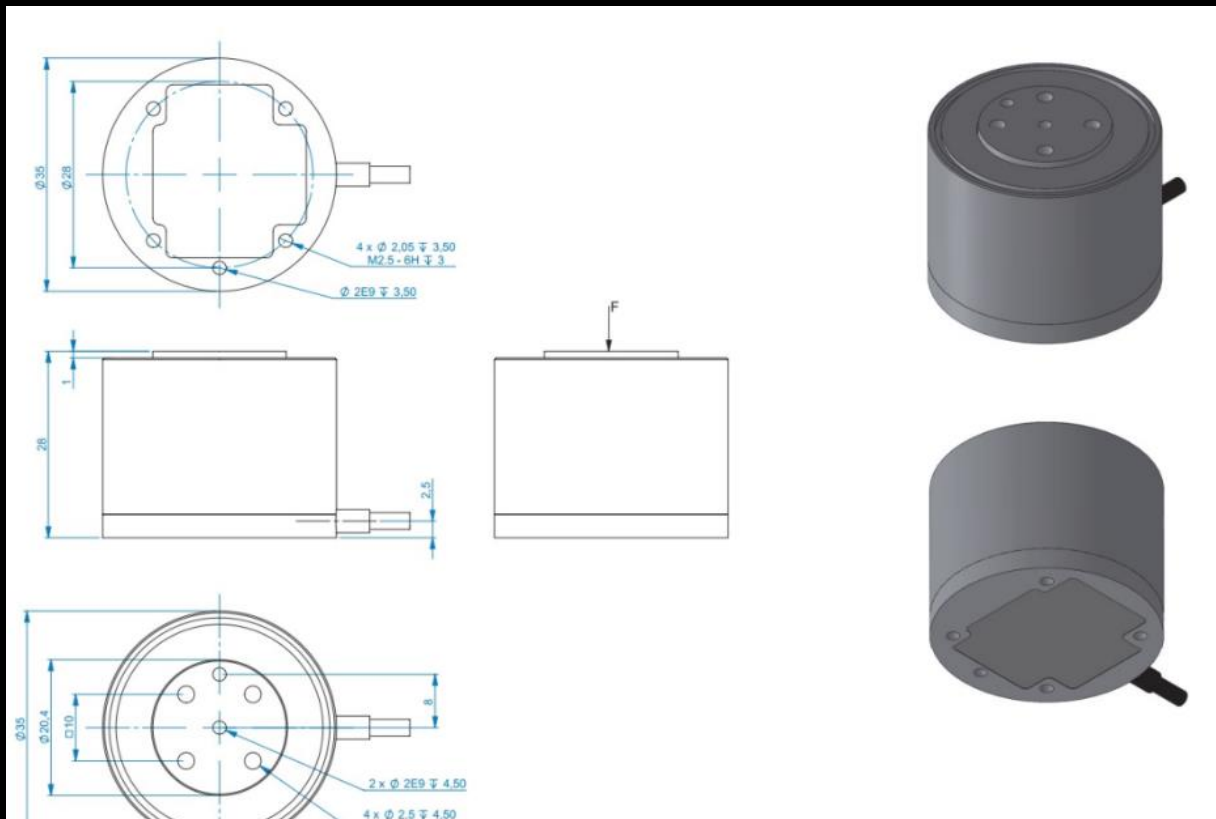


POMIARY

CZUJNIK SIŁY TRÓJOSIOWY + LABVIEW



CZUJNIK SIŁY TRÓJOSIOWY



Measure it right
Forsentek

Weighing || Measuring || Controlling

Model:FNZ

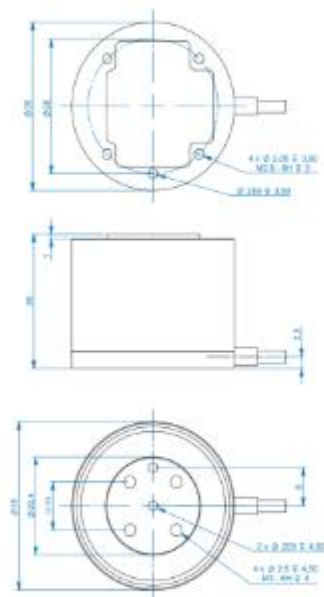
Technical drawing and photograph of the Forsentek FNZ force sensor. The drawing shows a cross-section with force axes ($Fz+$, Fx , Fy) and dimensions. The photograph shows the physical device with a CE mark and a label.

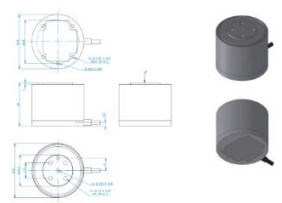

Dimensions and specifications from the drawing:

- Top view: 20 , 18 , $4-M3 \times 0.5$ Both sides
- Side view: 40 , 15.2 , 10 , 10 , 15.2 , 40
- Force axes: $Fz+$, Fx , Fy , $Fx-$, $Fy+$, $Fy-$, $Fx+$

Ordering Code:

Part No.	Capacity
	$F_x=F_y=F_z$
FNZ-10N	10N
FNZ-20N	20N
FNZ-50N	50N
FNZ-100N	100N



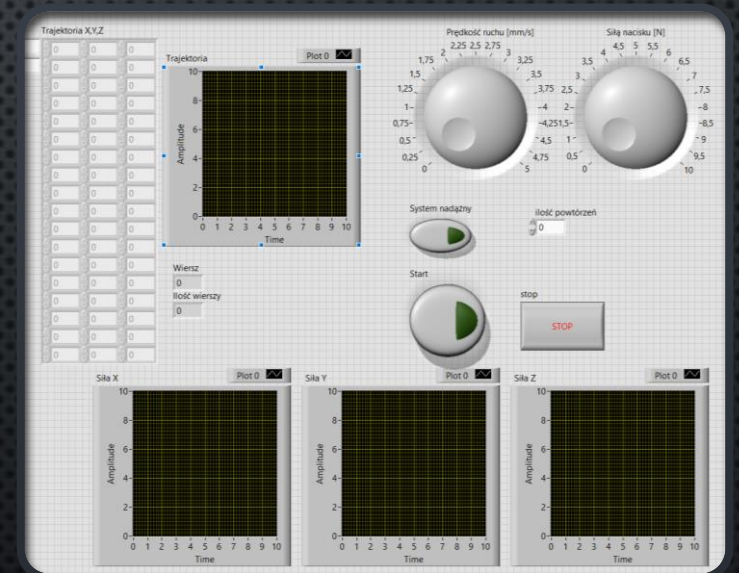
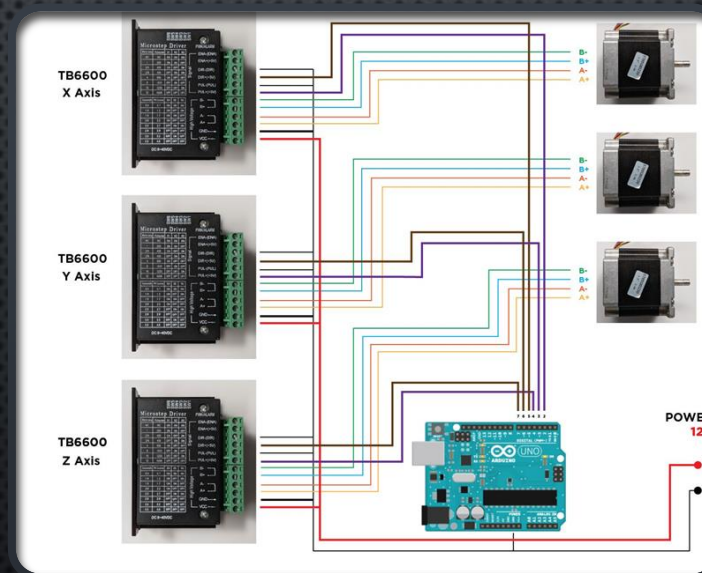
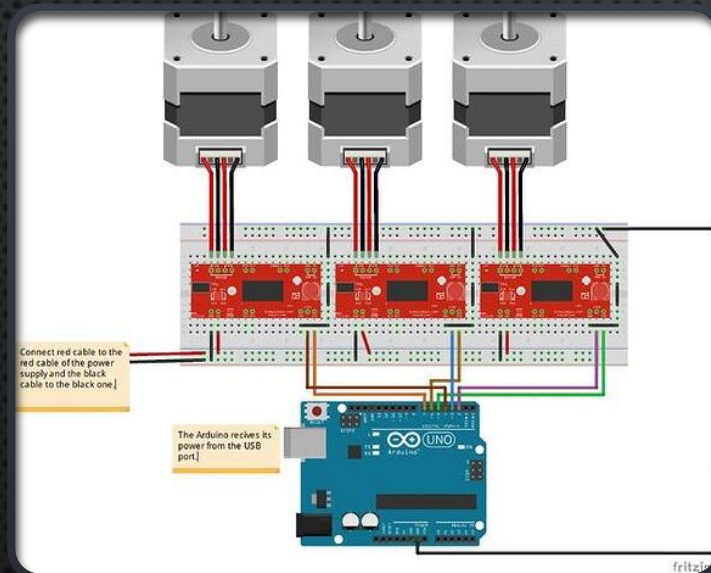
		
<u>Price</u>	2076,8 [EUR] 8971,78 [PLN] Po kursie Euro = 4,32zł (22.04) Cena za komplet czujnika wraz ze wzmacniaczem i wliczoną dostawą Niemcy	776 [USD] 3142,8 [PLN] Po kursie Dotara = 4,05zł (22.04) Cena za komplet czujnika wraz ze wzmacniaczem i wliczoną dostawą Chiny
<u>Accuracy</u>	0,5%	0,15%
<u>Nonlinearity</u>	0,2%	0,2%
<u>Hysteresis</u>	0,05%	0,2%
<u>Capacity</u>	10 N	10 N

POMIAR KARTEZJAŃSKI Z PROGRAMOWAN A ŚCIEŻKĄ



```
%  
:0000  
N10 (PROGRAM PRODUCED - 14 GRU 18)  
N20 G90 G71  
N30 G40 G80  
'(OP 1 PRZEJŚCIE ZGRUBNE NARZEDZIE 4 FLAT - 20MM)  
'(ŚREDNICA EFEKTYWNA 20, NADDATEK WYNOŚI 1)  
N40 T0404 M03 'Select tool and offset  
N50 S11900 H04 M06 'Next tool is 00, Next XY is 42.2, 36.527  
N60 G0 X42.2 Y36.527  
N70 G43 Z25. H04 M09  
N80 Z5.  
N90 G1 Z-18. F2380  
N100 X12.867 Y52.005 F4760  
N110 G2 Y97.995 R26.  
N120 G1 X71.533 Y128.95  
N130 G2 X128.467 R61.  
N140 G1 X187.133 Y97.995  
N150 G2 Y52.005 R26.  
N160 G1 X128.467 Y21.05  
N170 G2 X71.533 R61.  
N180 G1 X42.2 Y36.527  
N190 G0 Z25.  
N200 X100. Y99.  
N210 Z5.  
N220 G1 Z-18. F2380  
N230 G2 X120.787 Y63.004 R24. F4760  
N240 X79.213 R24.  
N250 X100. Y99. R24.  
N260 G0 Z25.  
N270 M09  
N280 M30  
%
```


STEROWANIE CNC



TARGI STOM-TOOL I DNI DRUKU 3D

STOM-TOOL - BLECH & CUTTING - LASER - ROBOTICS - FIX, Spawalnictwo, Expo-Surface, Fluid Power, Control-Stom, Dni Druku 3D, TEiA



Partner technologiczny targów



19-22 | 03 | 2024

